



**Brüel & Kjær Vibro**  
a spectris company



## THE ALLROUNDERS

# VIBROPORT 80 & VIBROTEST 80

- Machine Diagnosis
- Field Balancing
- Condition Monitoring

## Machine evaluation, trouble-shooting and predictive maintenance



The **VIBROPORT 80** and **VIBROTEST 80** are the newest generation of Brüel & Kjær Vibro's portable measuring instruments. Since the early 1970s, Brüel & Kjær Vibro has been successfully developing solutions for condition-based maintenance and field balancing of rotating equipment in numerous industrial applications. This cumulative experience has resulted in the development of the **VIBROPORT 80** and **VIBROTEST 80** handhelds.

Designed with powerful diagnostics and analysis, balancing and condition monitoring capability, these all-purpose instruments are easy to use and flexible enough to tackle the most demanding applications:

- **VIBROPORT 80** – With its large screen, this instrument is ideal for capturing machinery vibration and undertaking detailed multi-channel diagnostics to determine the cause and nature of many developing faults. Two-plane polar plots can also be easily viewed in the screen.
- **VIBROTEST 80** – A more compact, lightweight version of the **VIBROPORT 80**, this instrument is ideal for fast and easy route-based data collection, monitoring the condition of the machines and balancing.

An ATEX version of the VIBROTEST 80 is available.



*Machine Diagnosis  
Field Balancing  
Condition Monitoring*

## Powerful functionality for extensive application versatility

With its extended monitoring, balancing and analysis capability, both the **VIBROPORT 80** and **VIBROTEST 80** can be used on a wide range of machines in the petrochemical, power and process industries. Their extensive measurement and sensor input capability make them the perfect choice for early detection and diagnosis of incipient faults in, for example, bearings, shafts, gears, couplings, or casings. This includes everything from balance-of-plant to critical machines, and even those in ATEX intrinsic safety areas. The diagnostic functionality of these instruments rival that of many on-line condition monitoring systems!

The powerful application functionality of our two allrounder handhelds is demonstrated in the following pages with examples.

It is this application versatility plus the flexible modular setup and user-friendly operation that makes the **VIBROPORT 80** and **VIBROTEST 80** the ideal portable vibration instruments for helping deliver machine uptime to your plant.

### Machine condition monitoring

remains being universally accepted as an important part of any modern predictive maintenance program. If developing faults can be detected and diagnosed early, maintenance can be planned ahead of time. With the right monitoring strategy and instruments, this can significantly minimize the life cycle costs of the monitored machines and maximize production.







# Powerful vibration analysis and machine diagnosis

One of the important principles of condition monitoring is early detection and diagnosis of a developing machine fault so maintenance can be planned ahead of time.

In this example, a compressor train is being analyzed by the **VIBROPORT 80** or **VIBROTEST 80**. Real overall vibration measurements (not calculated overall values from spectra) such as the bandpass and a BCU measurement for bearing fault detection are measured during running conditions to get a glimpse of the general condition of the gearbox. If alarm limits are exceeded, a number of measurements can be taken from the three "toolbox" modules on the right for further analysis, such as the FFT. Under variable speed conditions, overall vibration vs. speed and order tracking bandpass measurements can also be derived by an innovative post-processing approach.

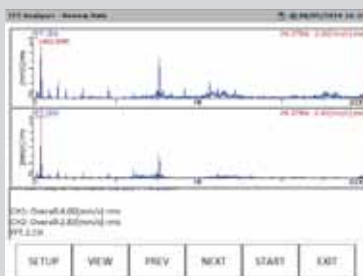
## ★ Highlights of the OVERALLS MODULE (Machine condition overall values)

- Parallel measurement of the overall condition of the machine and the rolling-element bearings
- Various methods offered for monitoring the rolling-element bearings
- Overall value measurements as a function of time and rotational speed (optional)

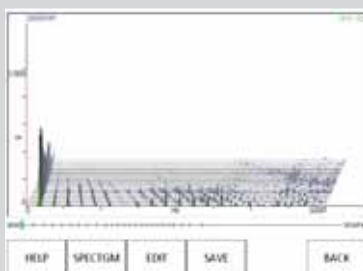
## In the field



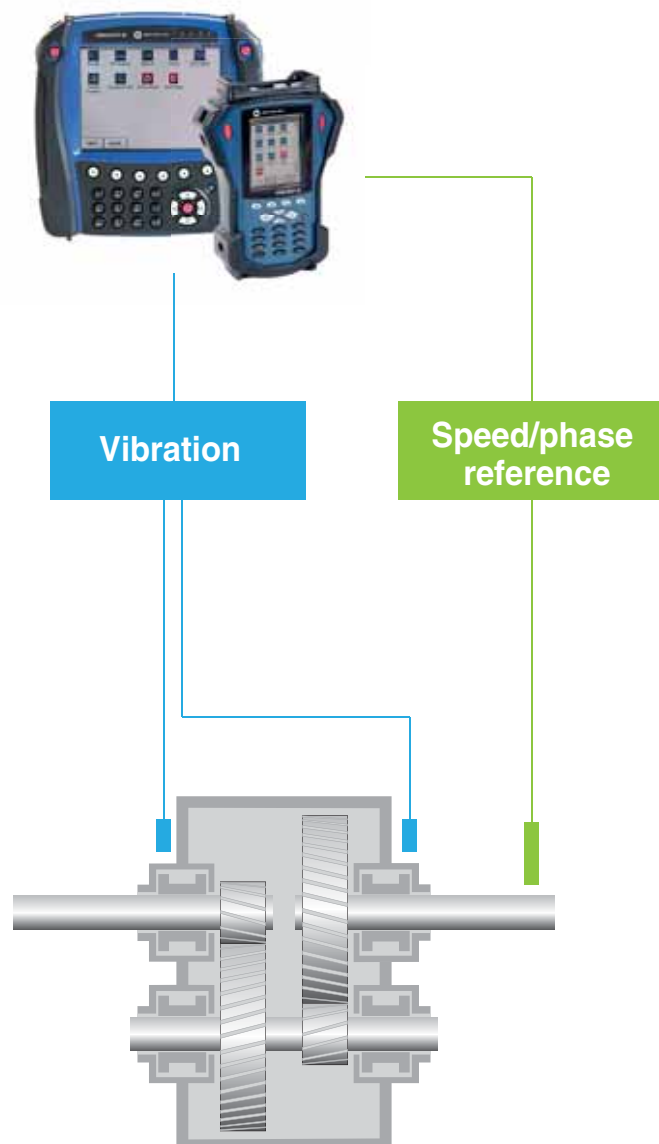
Two-channel real overall measurements (bandpass/BCU)



Two-channel FFT



Tracking FFT waterfall plot



Operation: steady state and transient speed

# Detailed diagnostics and analysis for all operating conditions

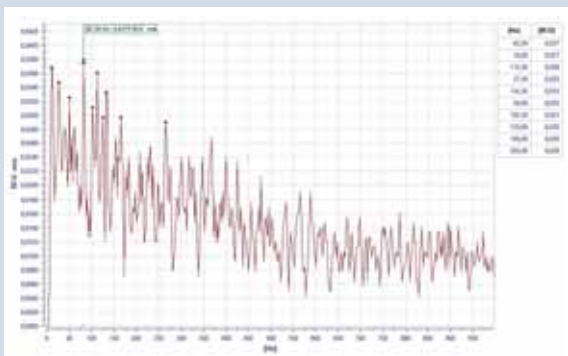
Field diagnostics give a good understanding of the fault, but more detailed vibration analysis can be done on the host computer with the Report & Route Manager software. Post-processing of the time signal in the Tracking Module enables you to more precisely analyze the detected fault, in order to determine its location and severity. This can include steady-state and transient analysis for FFT spectra and waterfall diagrams as shown below.

- ★ Highlights of the **FFT-ANALYZER MODULE (Spectral analysis)**
- FFT frequency range up to 80 kHz and up to 25,600 lines resolution
  - Envelope spectrum (BCS and SED)
  - Simultaneous display of time signal and spectrum
  - Cross-channel phase (phase difference between two channels without using a tacho)
  - Order analysis
  - Cursor: single, peak, harmonic

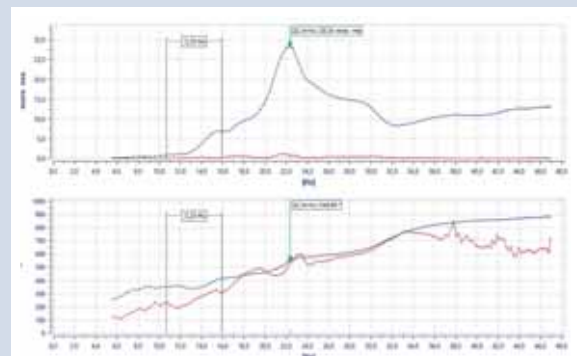
- ★ Highlights of the **TRACKING MODULE (Order analysis)**
- Identifying machine resonances
  - Innovative measurement approach: Recording the raw vibration signal, post-processing the raw signal: Bode, Nyquist, table view, FFT waterfall diagram, spectrogram



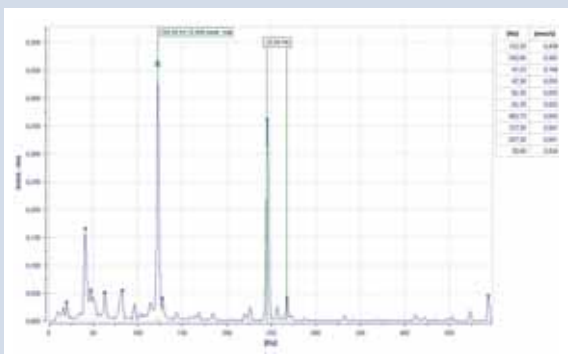
## Report & Router Manager software on host computer



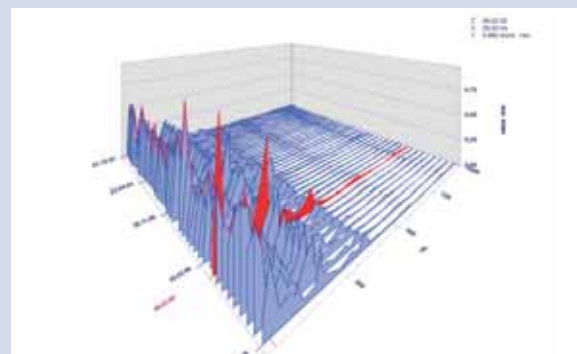
Envelope spectra plot



Run-up Bode diagram plot



FFT plot



Waterfall FFT plot



# Field balancing made easy

Field balancing is much more cost-saving than using a balancing machine, and in many ways more effective. In this example the **VIBROPORT 80** or **VIBROTEST 80** is performing a two-plane static and dynamic balancing on a motor, using the two-plane polar plot. The entire balancing process goes faster using the "Fire Key". After the field balancing you can upload all data into the Report & Route Manager software and, by one mouse-click, print out a report or prepare a customized report in Microsoft® Word.



### ★ Highlights of the BALANCING MODULE

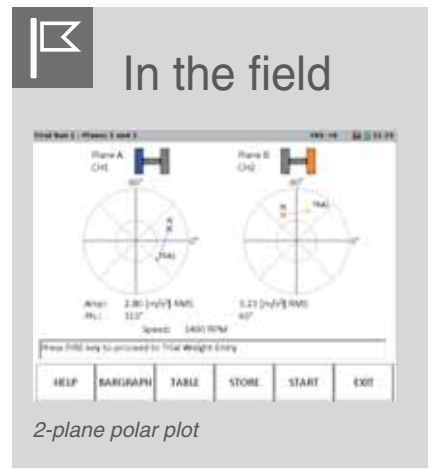
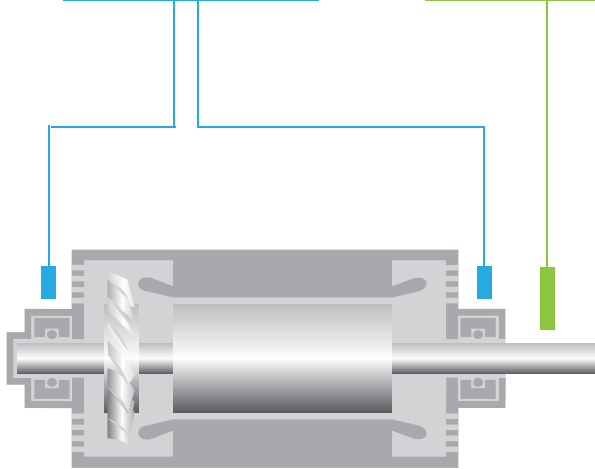
- One or two-plane field balancing (static/dynamic)
- Ultrafast Two-plane balancing through innovative prognosis function
- Large one or two-plane polar plot display
- Two-plane balancing with one vibration sensor
- Adjustable target value for residual vibration display (colour coding)
- Free choice of adjustment method (polar, fixed location, fixed mass)



The VIBROPORT 80 plot display is ideal for field balancing.

Vibration

Speed/phase reference

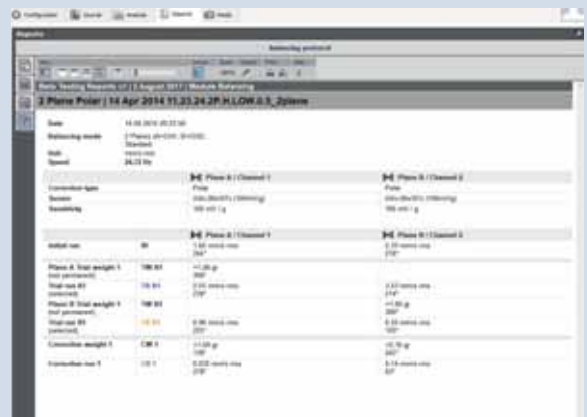


2-plane polar plot

## Report & Route Manager software on host computer



Two-plane polar plot



Simple balancing report, ready for print-out



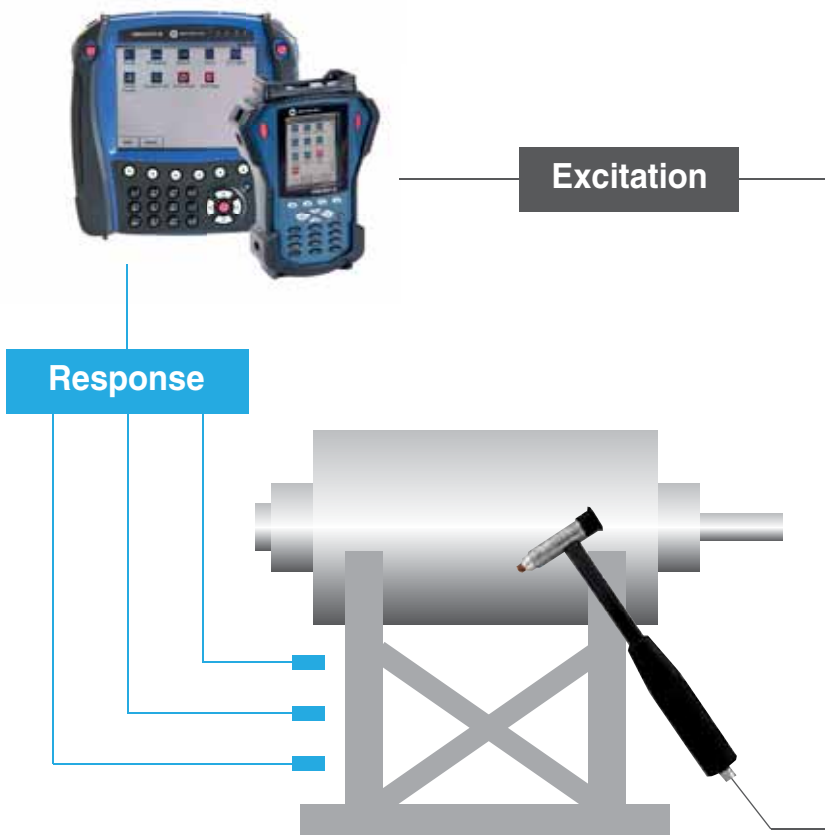
# Effective tools for transfer function

Transfer function determines the structural resonances by impact excitation on machines that are not rotating or on immovable objects such as foundations or casings. The transfer function (i.e. FRF, the frequency response, the ratio of the input impulse load and the measured impulse response vibration) is determined with an impact hammer having a built-in load sensor. In this example the **VIBROPORT 80** or **VIBROTEST 80** is being used to find a spurious resonance that has been causing the bearings on this motor to fail prematurely. The transfer function can be analyzed in the Report & Route Manager software.



★ **Highlights of the TRANSFER FUNCTION MODULE**

- All conventional evaluation methods available (load, acceleration, displacement)
- Coherence analysis (with colour coding of acceptable/inacceptable coherence level)

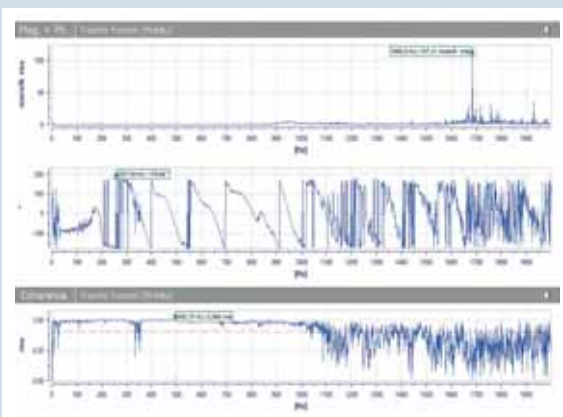


**In the field**

Excitation and impulse responses



## Report & Route Manager software on host computer



Transfer function and coherence



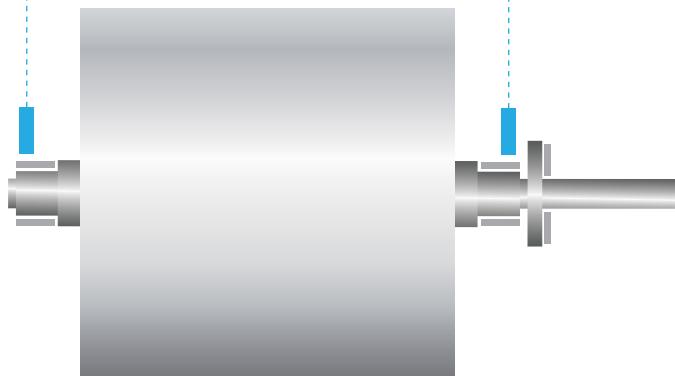
# Efficient machine management via route-based inspection

One of the important principles of condition monitoring is data acquisition and monitoring to alarm limits. With the uploaded route, you are prompted to go from machine to machine, and measurement point to measurement point to collect data in a systematic, efficient way. If there is an alarm situation, you are notified and you can easily extend the route with additional measurements if needed. In this example, the **VIBROPORT 80** or **VIBROTEST 80** is routinely monitoring a compressor.



*The VIBROTEST 80 is ideal for data collection because of its light weight and easy handling.*

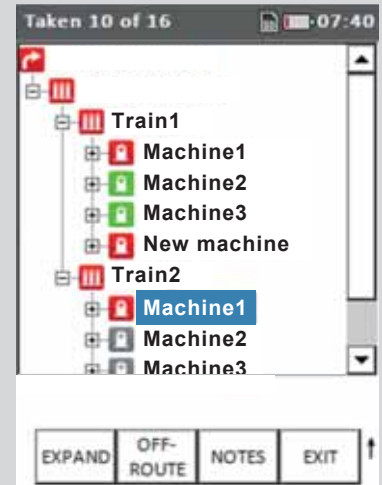
Vibration



## ★ Highlights of the DATA COLLECTOR MODULE

- Unlimited amount of measurement routes with up to 5000 measurement tasks
- Up to 12 measurements and measurement types per measurement point

## In the field



Data collection route

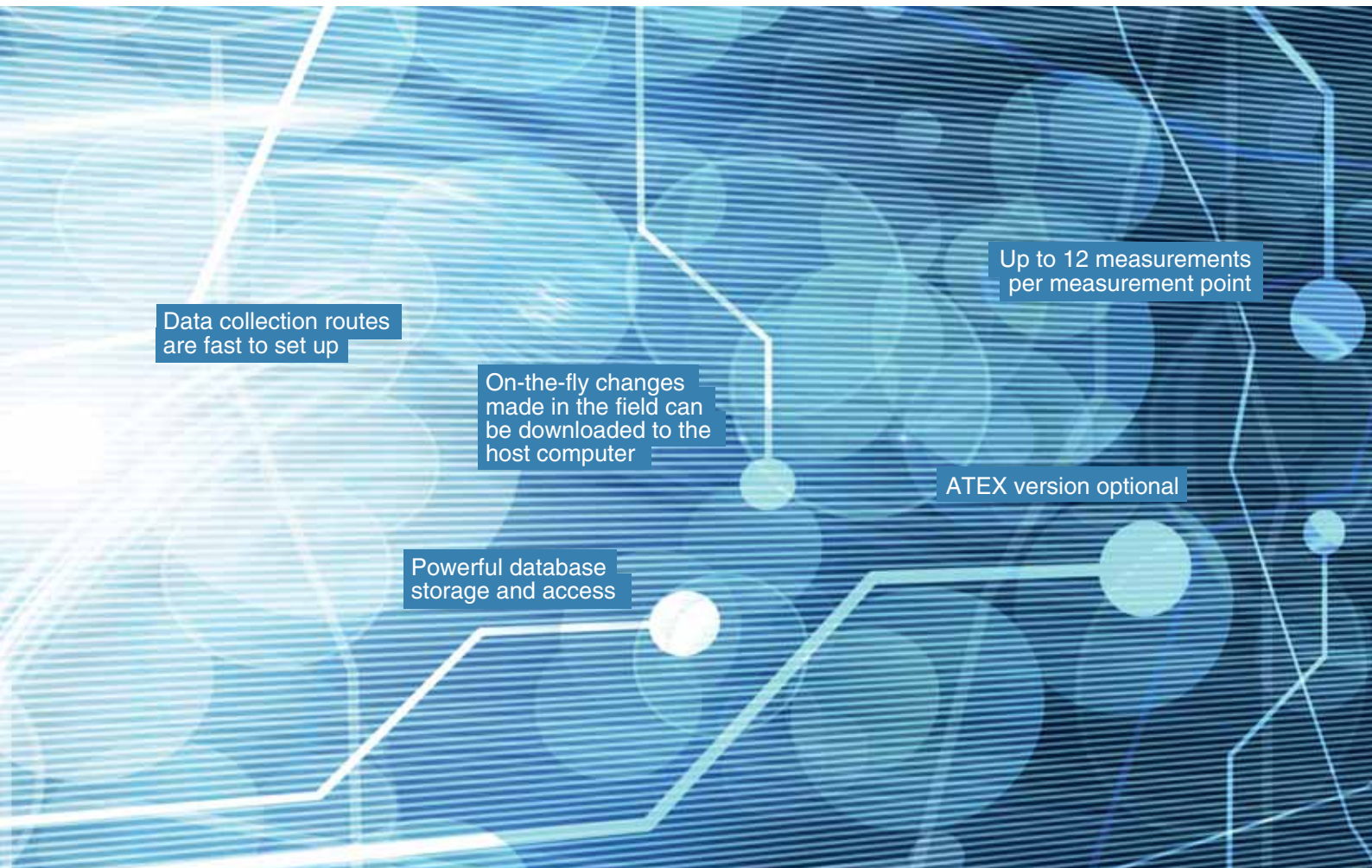


Route GUI in the Report & Route Manager

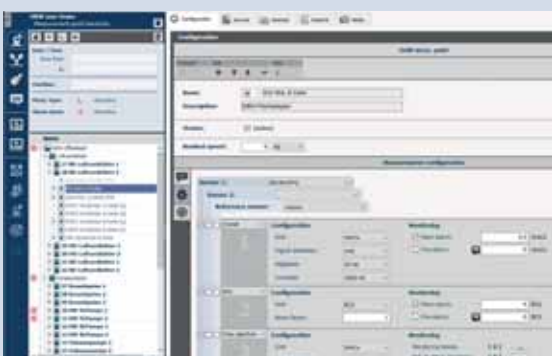


## Setting up routes and analyzing data

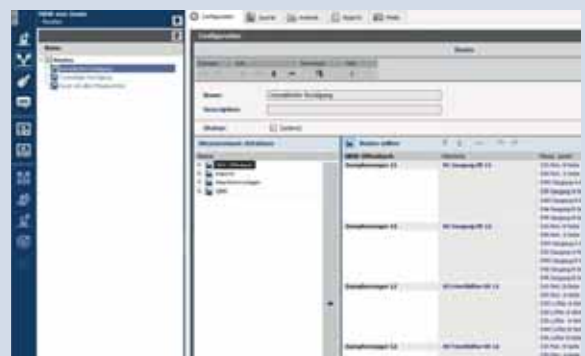
The Report & Route Manager host software enables you to quickly and efficiently set up a data collection route so it can be downloaded to the **VIBROPORT 80** or **VIBROTEST 80** instruments. The same software uploads data from the handheld via a USB connection to store it in the database and to do analysis on it.



## Report & Route Manager software on host computer



Create a plant and configure measurements...



...then create a route.



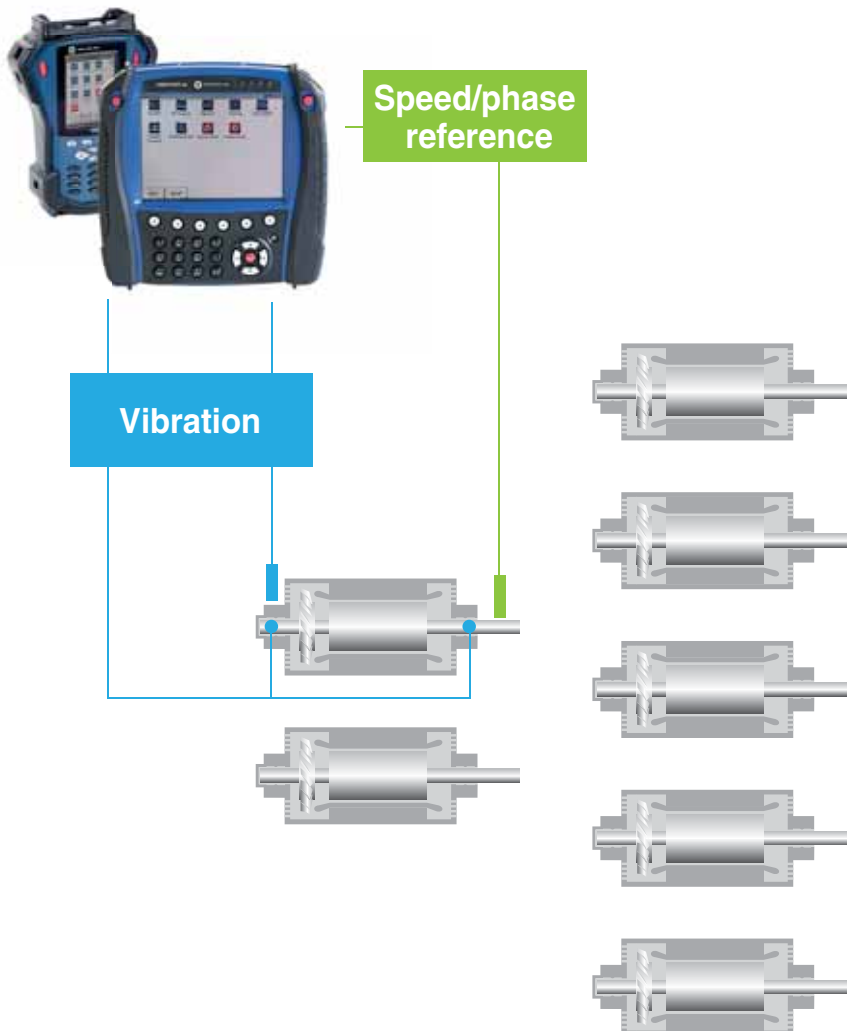
## Fast and easy way to test machines

Use one of the standard templates (e.g. ISO 10816) or a user-defined one to compare actual measurements to established limits for a given machine. In this example a **VIBROPORT 80** or **VIBROTEST 80** is being used to quality test motors from the factory assembly line. This non-route based data collector function easily guides you through the entire measurement process by showing a “mini route” (picture with measurement locations and directions) on the instrument and gives the results as a colour-coded pass/fail indication. It can also be used for testing serviced machines and commissioning. This module requires the use of the Report & Examiner Software (for more information, please refer to our website [www.bkvibro.com](http://www.bkvibro.com)).



### ★ Highlights of the ACCEPTANCE TESTING MODULE

- Up to 64 vibration monitoring bands can be simultaneously measured, i.e. used for overall values calculation
- Machine picture showing sensor positions
- Vibration spectra can be saved automatically
- Standard templates available, can be modified
- Easy-to-read traffic light results
- Easy, fast operation of buttons



**In the field**

*Measuring points at a glance - insert the picture of your application!*

## Perfect choice of hardware and software components with full flexibility

The **VIBROPORT 80** and **VIBROTEST 80** portable handhelds combine application versatility with a modular product concept that is easy to use by specialists and beginners alike. The **VIBROTEST 80** is a more compact, lighter version of the **VIBROPORT 80** with a smaller screen but the same functionality. The host monitoring software packages, which can be installed on all current Windows® PCs, download and upload data to the instrument via a USB port. Reports are made in Microsoft® Word.

**Report & Route Manager software** – The Report & Route Manager software simplifies organizing and evaluating the collected measurement data. From among the plant, the user can select the specific machine that needs immediate maintenance. The software then allows him to identify a potential fault and what caused it as early as possible. Data collection routes are defined and uploaded to the instrument. Measured data is downloaded and stored in the database for further analysis.

### ★ Highlights of the INSTRUMENTS

- Up to 4 input channels for vibration + speed (triaxial measurements possible)
- Robust, compact and lightweight housing (IP65)
- Easy handling and big colour display
- CSA certified, ATEX/IECE version optional (VIBROTEST 80 only)

## Cost-effective, ready-to-start package options

Both the **VIBROPORT 80** and **VIBROTEST 80** are available in several complete, ready-to-use packages that can cost-effectively meet your monitoring requirements. The package price always includes the software and the accessories! It doesn't matter what your application is or if you are a beginner or experienced user, there is a package for you. Moreover, you can upgrade your handheld at any time with different application modules, as your need grows.

Look at our website ([www.bkvibro.com](http://www.bkvibro.com)) for more information on our package offerings and the product specification documents available for download, or contact your local sales representative.



## Contact

### **Brüel & Kjær Vibro GmbH**

Leydheckerstrasse 10  
64293 Darmstadt  
Germany  
Phone: +49 6151 428 0  
Fax: +49 6151 428 1000

[info@bkvibro.com](mailto:info@bkvibro.com)

### **Brüel & Kjær Vibro A/S**

Skodsborgvej 307 B  
2850 Nærum  
Denmark  
Phone: +45 77 41 25 00  
Fax: +45 45 80 29 37

[www.bkvibro.com](http://www.bkvibro.com)

### **Brüel & Kjær Vibro**

SETPOINT Operations  
2243 Park Place, Suite A  
Minden, Nevada 89423 USA  
Phone: +1 775 552 3110

[info@setpointvibration.com](mailto:info@setpointvibration.com)  
[www.setpoint.bkvibro.com](http://www.setpoint.bkvibro.com)